

AKIRA
makes life better

**Air Conditioner
Service Manual**



Большая библиотека технической документации

<https://splitsystema48.ru/instrukcii-po-ekspluatacii-kondicionerov.html>

каталоги, инструкции, сервисные мануалы, схемы.

MODEL: AC-W7CGP




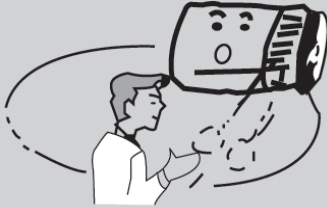

CONTENTS

TECHNICAL SPECIFICATION.....	4
TROUBLE SHOOTING GUIDE.....	5
EXPLODED VIEW.....	6
PART LIST.....	7
CIRCUIT DIAGRAM.....	8

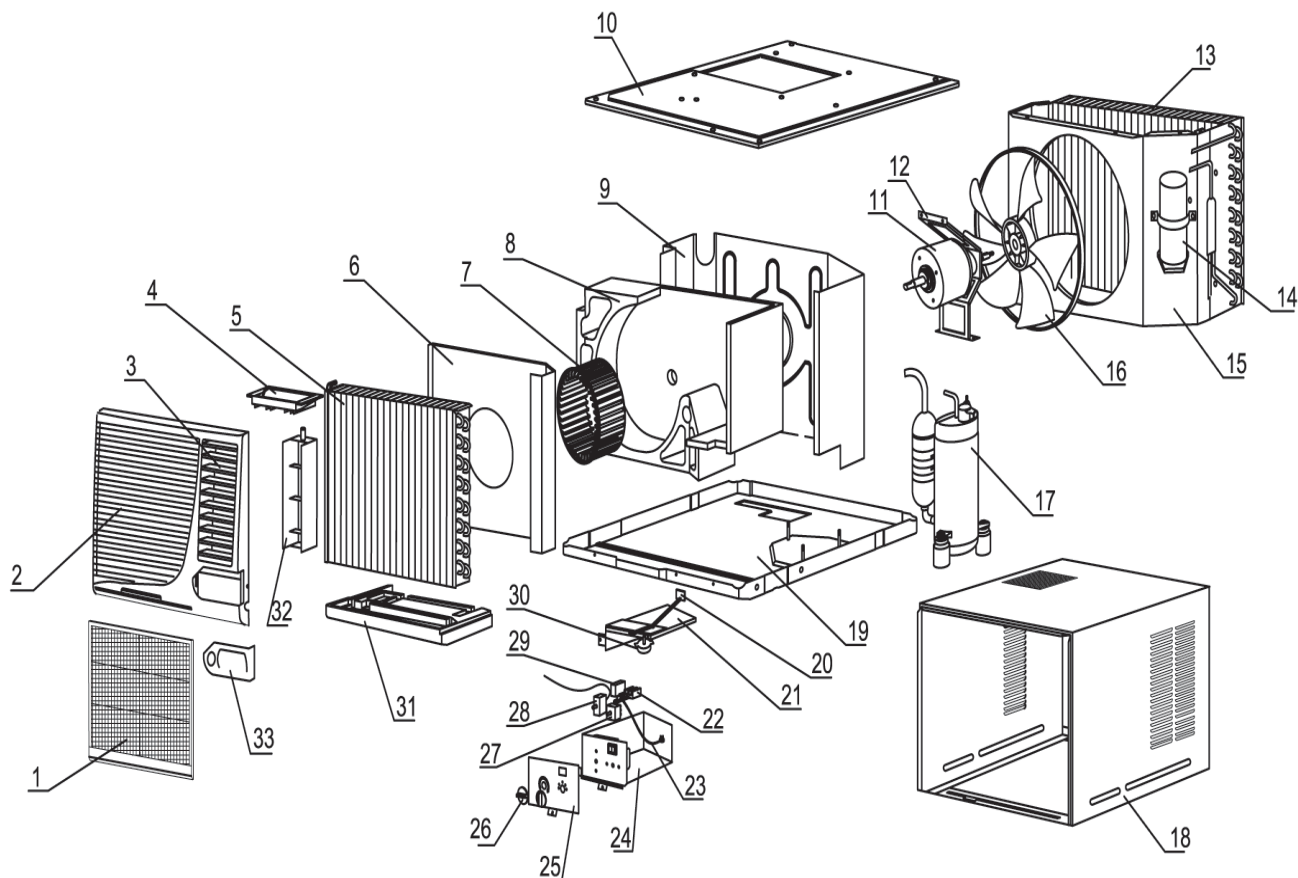
TECHNICAL SPECIFICATION

Content		AC-W7CGP
Function		Cooling
Power supply		1Ph 230V- 50Hz
Capacity (W)		2100
Rated input power (W)		730
Rated current (A)		3.4
Air flow (m ³ /h)		400
Dehumidifying volume (L/h)		0.8
EER(W/W)		2.71
Indoor side	Fan type/piece	Centrifugal fan-1
	Diameter-length(mm)	180-85
	Evaporator	Aluminum –copper
	Row-fin distance(mm)	3-1.5
	Working area(m ²)	0.074
	Swing motor	SM021
	Input/Speed	5W-6r/min
	Noise(dB(A))	51
Outdoor unit	Compressor type	Reciprocation
	Compressor Model	2R11S236A6H
	Compressor input Power (W)	/
	L.R.A. (A)	19
	Protection device	External overload protector
	Starting method	Capacity
	Working temp.	≤115°C
	Condenser	Aluminum-copper
	Row-fin distance (mm)	2-1.4
	Working area (m ²)	0.12
	Fan type-piece	Axial flow fan-1
	Fan diameter (mm)	310
	Throttling method	Capillary
Noise (dB(A))	57	
Motor fan speed (rpm)		1080
Working capacitor (μF)		3.5μ F/450VAC
Dimension (W x H x D) (mm)		450 x 350 x 580
Net weight (kg)		35
Refrigerant charge		R22/480g

TROUBLE SHOOTING GUIDE

Fault phenomenon	Trouble-shooting
<p>Air conditioner does not operate at all.</p> 	<ul style="list-style-type: none"> * Is power fail? * Is plug out? * Is power fuse or switch off? * Is voltage higher than 253V or lower than 198V? * Is SET TIME suitable?
<p>Cool efficiency is not good.</p> 	<ul style="list-style-type: none"> * Is air inlet or outlet locking? * Is there any other heat source in room? * Are air filters dirty very much? * Is indoor fan speed set at LOW? * Is SET TEMP. suitable?
<p>Wireless remote controller is not available.</p> 	<ul style="list-style-type: none"> * If disturbed abnormally or operation modes changed too frequently, sometimes the electric controller would lose function. Please plug out and plug in again, it maybe OK. * Check batteries of wireless remote controller, if voltage is little, change batteries.
<p>Foggy air flows out.</p> 	<ul style="list-style-type: none"> * At COOL or DRY mode operation, sometimes there is foggy air flowing out of indoor unit, this is because that room humid air has been cooling rapid.
<p>The air conditioner operation is noisy.</p> 	<ul style="list-style-type: none"> * For a noise that sounds like water flowing: This is the sound of freon flowing inside the air conditioner unit. * For a noise that sounds like a shower: This is the sound of the dehumidifying water being processed inside the air conditioner unit.
<p>It seems that condensation is leaking from air conditioner.</p>	<ul style="list-style-type: none"> * Condensation occurs when the airflow from the air conditioner cools the warm room air.
<p>Air conditioner does not operate for about 3 minutes when restart.</p>	<ul style="list-style-type: none"> * This is to protect the mechanism. * Wait about three minutes and operation will begin.
<p>Remote control display is faint, or no display at all.</p>	<ul style="list-style-type: none"> * Are the batteries depleted? * Are the batteries inserted in the opposite(+) and (-) directions?

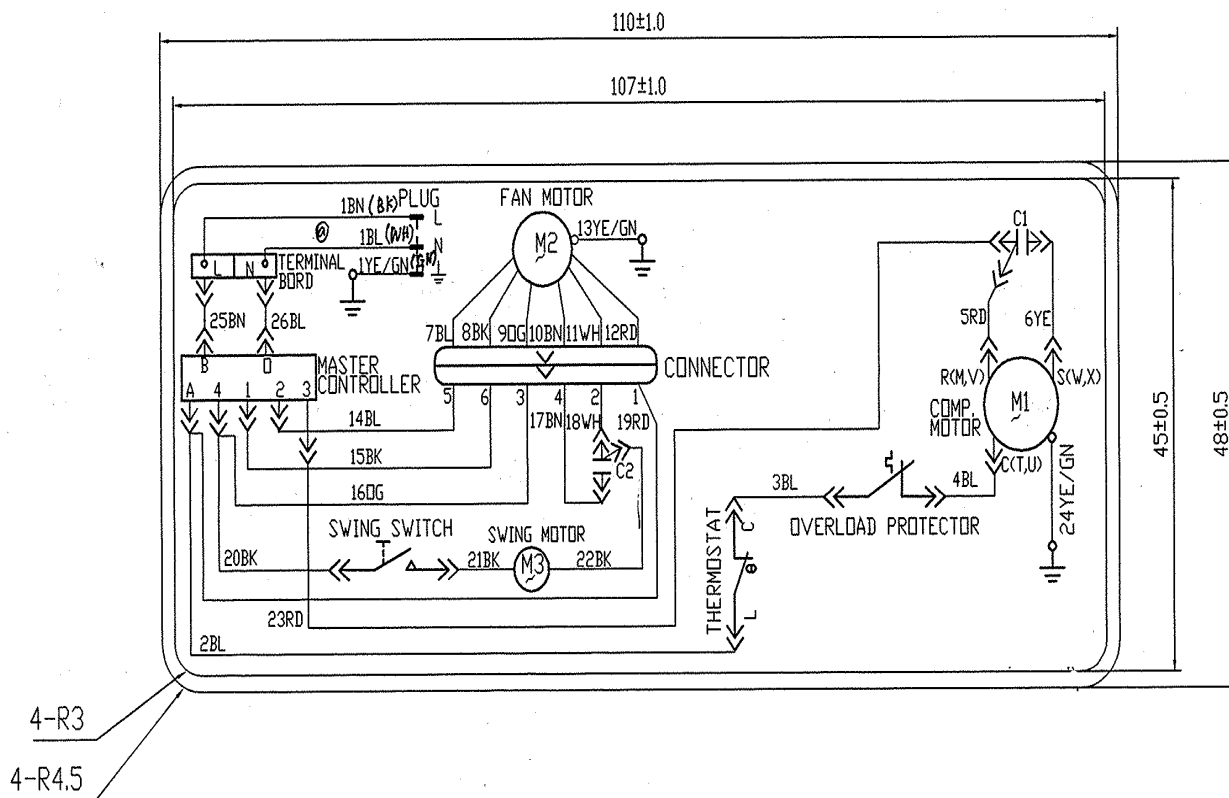
EXPLODED VIEW



PART LIST

No.	Description	Part No	Qty
1	Filter net A	11121127	1
2	Front panel A	20001131	1
3	Horizontal air guider	10511125	12
4	Cross beam	24241123	1
5	Evaporator	01031151	1
6	Insulation plate of housing	01231128	1
7	Centrifugal fan	10311125	1
8	Propeller housing	26151350	1
9	Front insulation plate	01231388	1
10	Top connection plate	01381201	1
11	Motor CJ45F	15011104	1
12	Motor support	01701123	1
13	Condenser	01101901	1
14	Capacitor box clamp	76711050	1
15	Rear Insulation Plate	01231600	1
16	Axial flow fan	10331125	1
17	Compressor 2R11S236A6H	00100271	1
18	Cabinet	01431005	1
19	Chassis assembly	01201901	1
20	Air door	26111124	1
21	Air hole plate	01221330	1
22	Terminal board	42011106	1
23	Power cord	40020305	1
24	Main electric box	01411125	1
25	Mask	20161901	1
26	Knob	45031123	2
27	Main switch	45010305	1
28	Thermostat	45040010	1
29	Motor capacitor	33010045	1
30	Swing motor SM021	15210217	1
31	Drain pan	12411003	1
32	Air guider plate	10521123	1
33	Main Cover A	20161130	1

CIRCUIT DIAGRAM





АКТРА

Большая библиотека технической документации

<https://splitsystema48.ru/instrukcii-po-ekspluatcii-kondicionerov.html>

каталоги, инструкции, сервисные мануалы, схемы.